



Jaco Schoeman

Operations Director: Ergo Mining Operations Proprietary Limited

24 February 2015

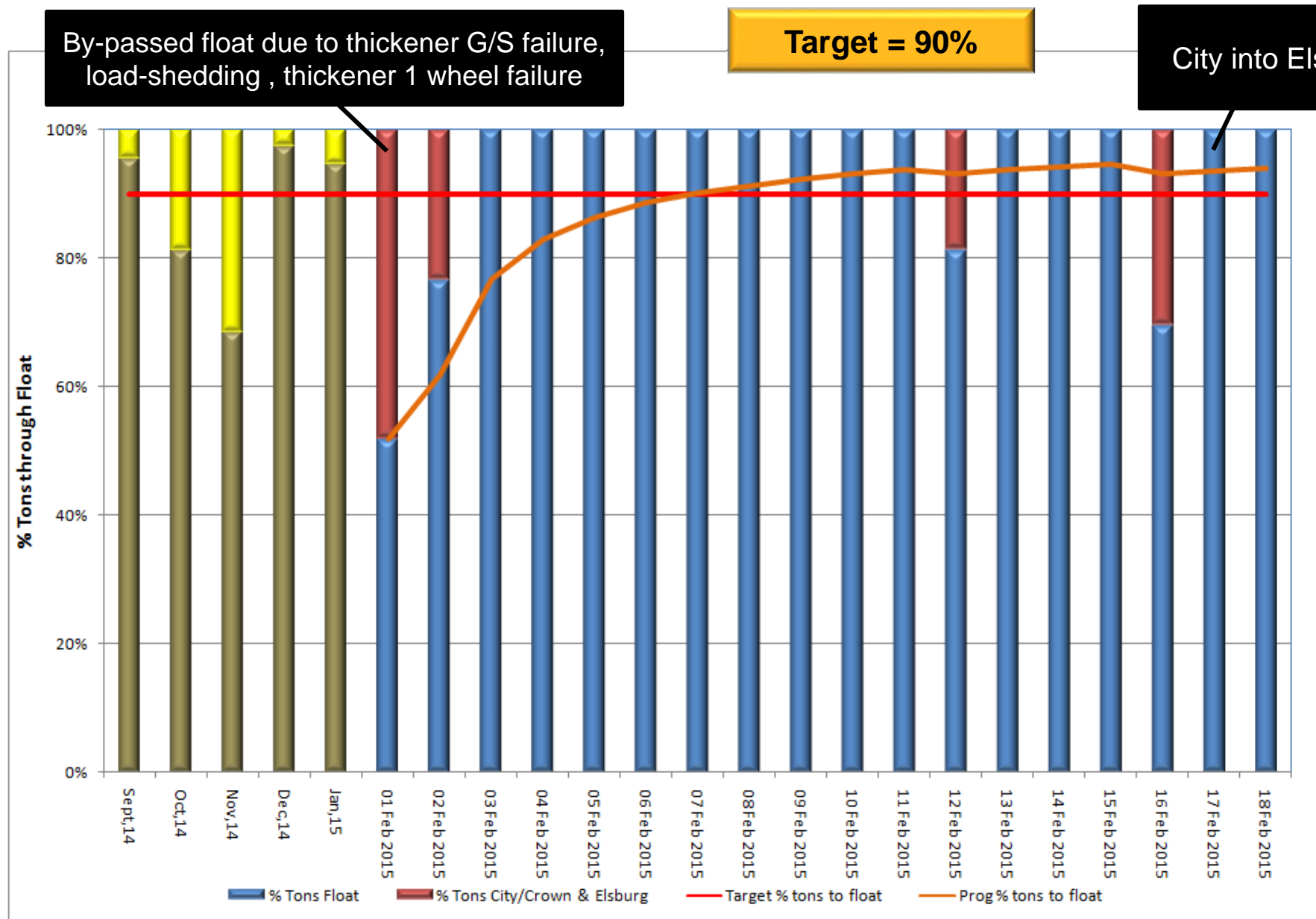
www.drdgold.com

DISCLAIMER



Many factors could cause the actual results, performance or achievements to be materially different from any future results, performance or achievements that may be expressed or implied by such forward-looking statements, including, among others, adverse changes or uncertainties in general economic conditions in the markets we serve, a drop in the gold price, a sustained strengthening of the rand against the dollar, regulatory developments adverse to DRDGOLD or difficulties in maintaining necessary licenses or other governmental approvals, changes in DRDGOLD's competitive position, changes in business strategy, any major disruption in production at key facilities or adverse changes in foreign exchange rates and various other factors. These risks include, without limitation, those described in the section entitled "Risk Factors" included in our integrated report for the fiscal year ended 30 June 2014, which we filed with the United States Securities and Exchange Commission on 31 October 2014 on Form 20-F. You should not place undue reliance on these forward-looking statements, which speak only as of the date thereof. We do not undertake any obligation to publicly update or revise these forward-looking statements to reflect events or circumstances after the date of this report or to the occurrence of unanticipated events. Any forward-looking statements included in this report have not been reviewed and reported on by DRDGOLD's auditors.

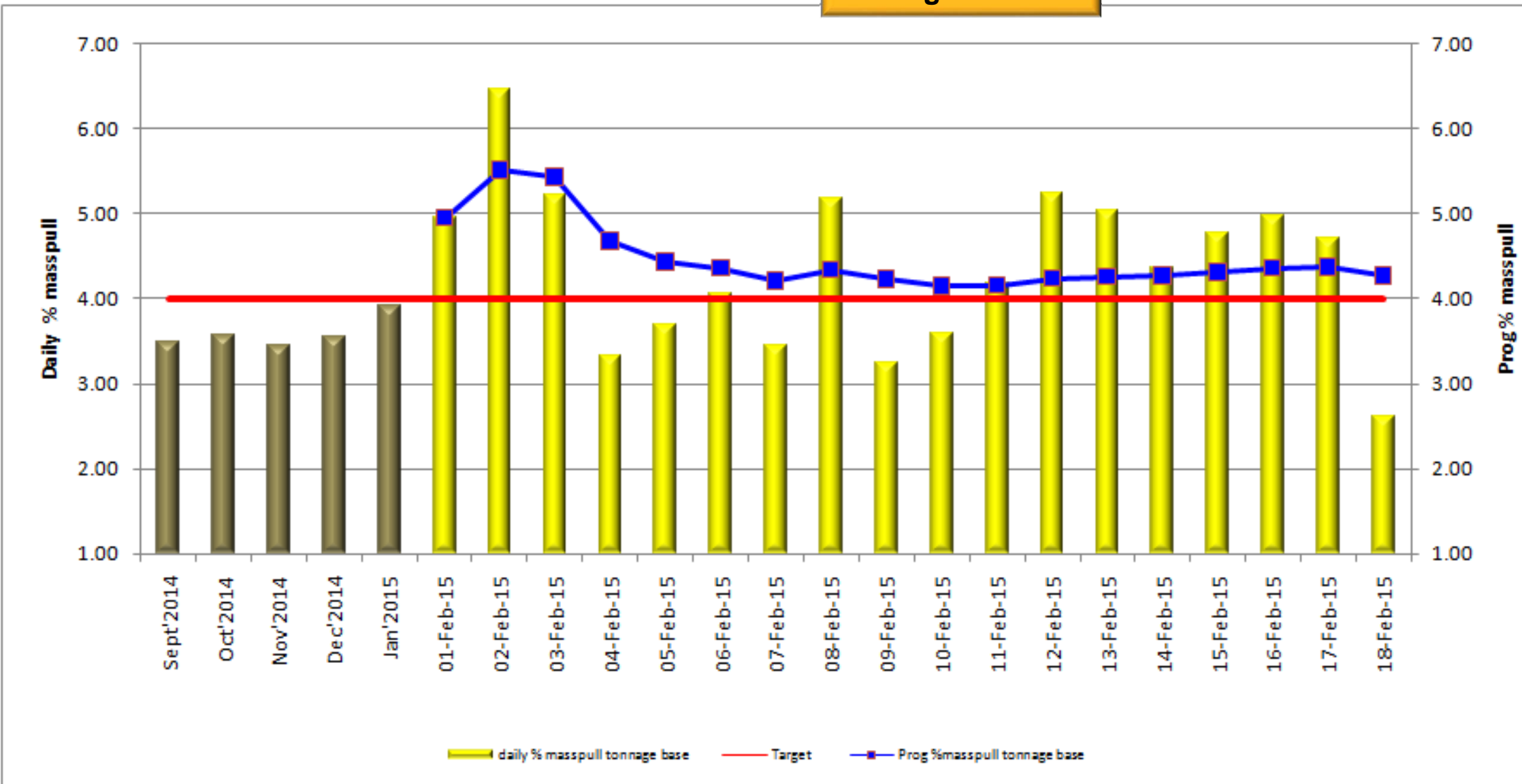
Float tons v total tons through plant (%)



% mass pull (tonnage based)



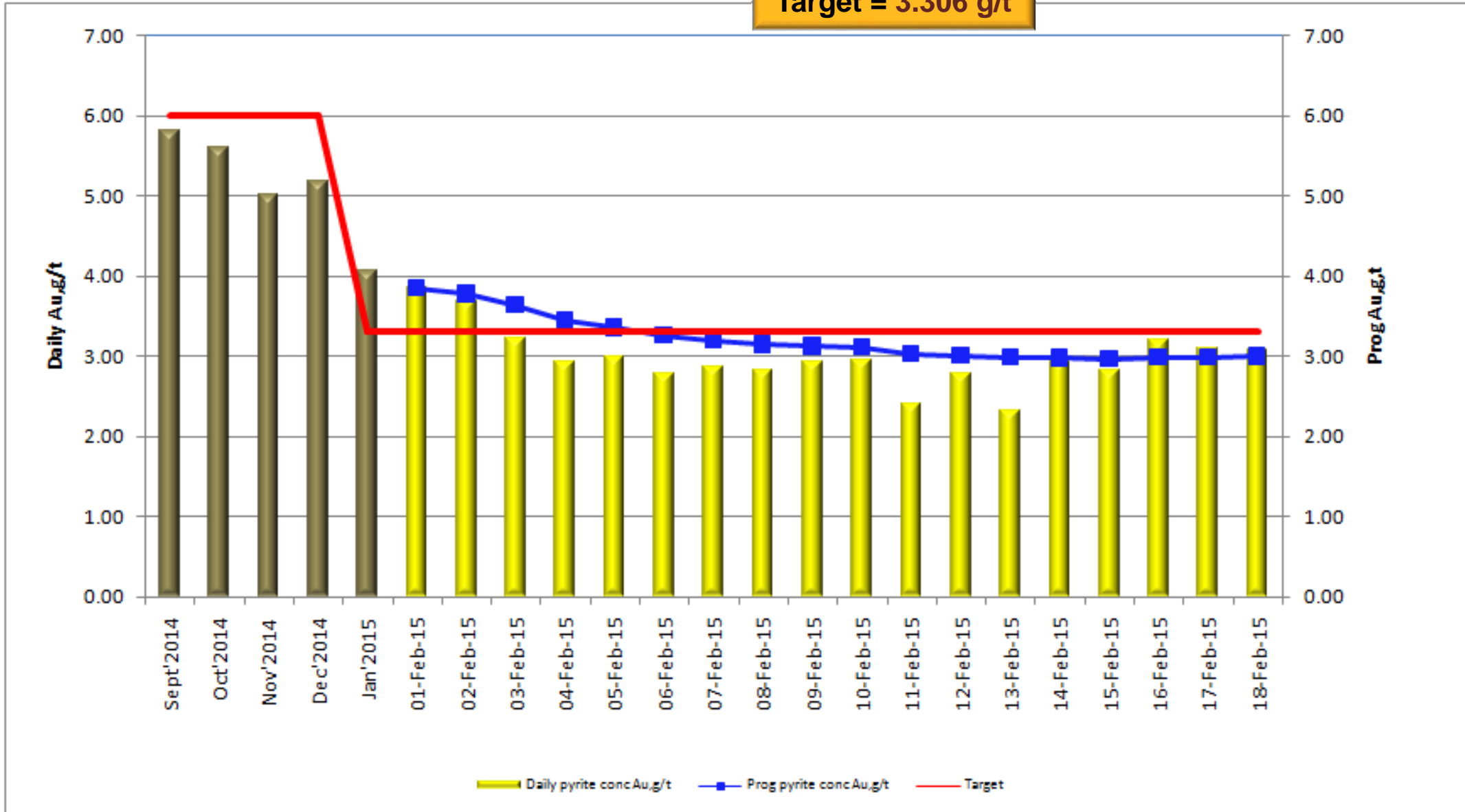
Target = 4%



Float pyrite leach concentrate grade (Au,g/t)



Target = 3.306 g/t

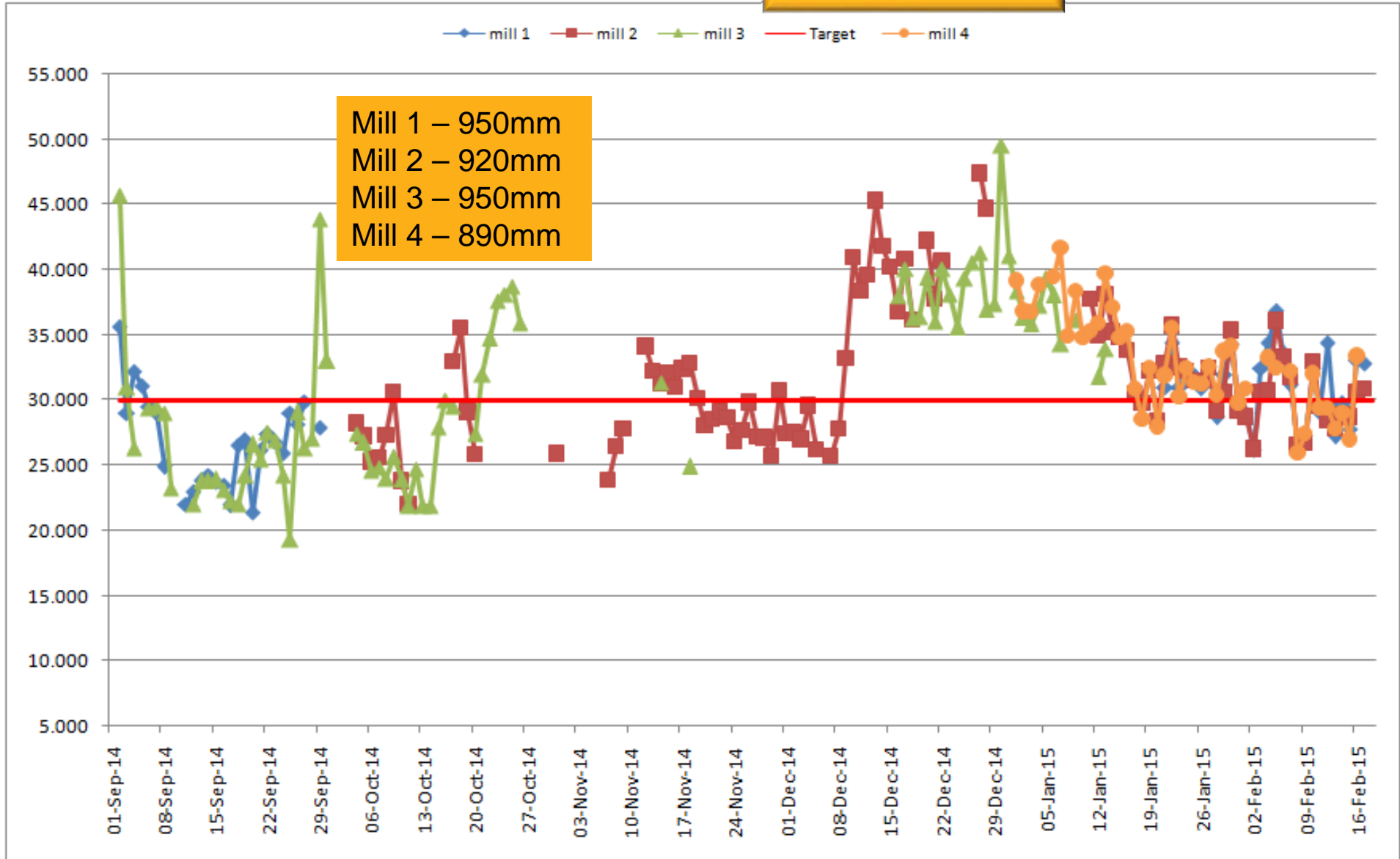


MILLING PERFORMANCE



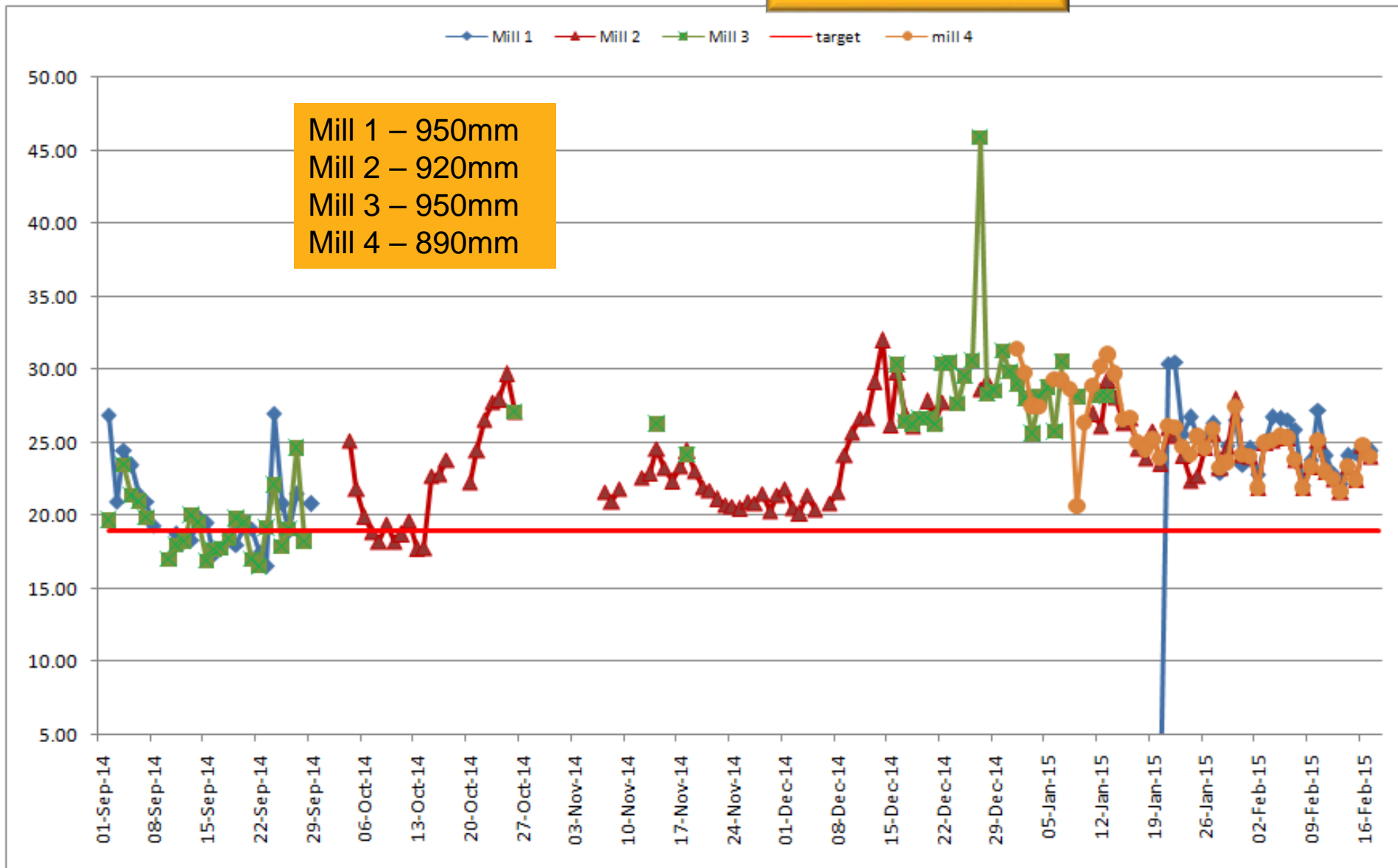
Mill 1, 2, 3 & 4 D80 feed

Target D80= 30



Mill 1, 2, 3 & 4 D80 product

Target = 20

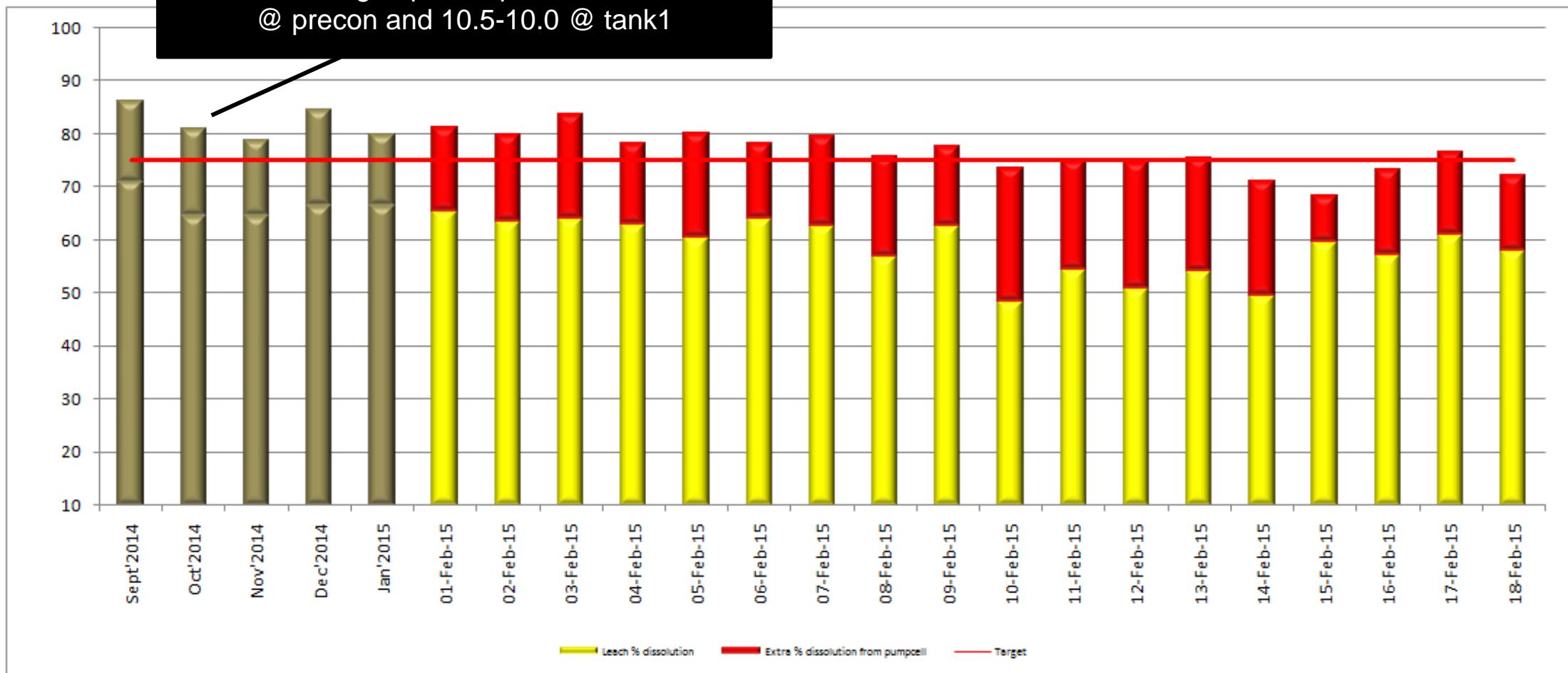


LEACHING PERFORMANCE

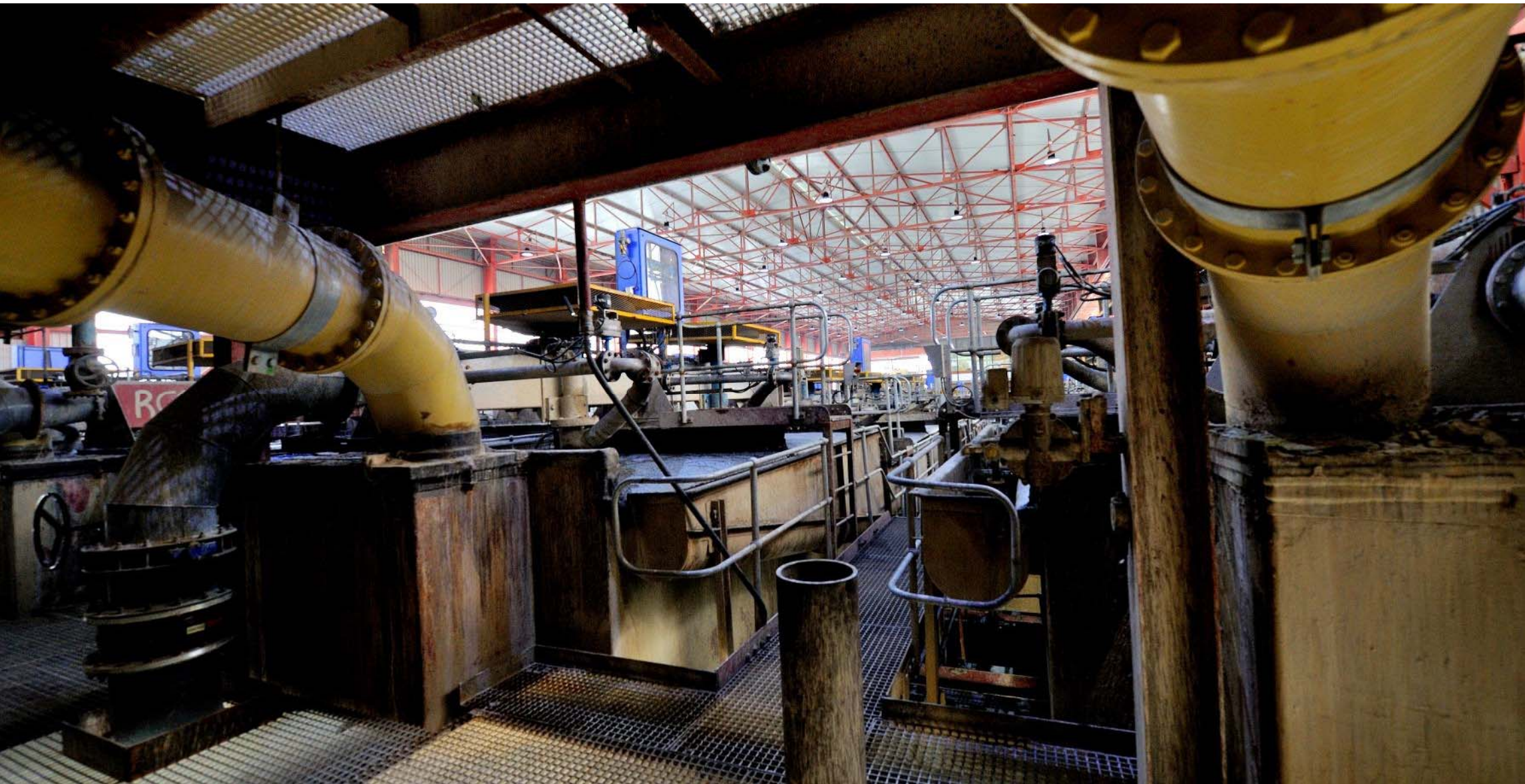


Overall % dissolution (split between leach and pumpcell)

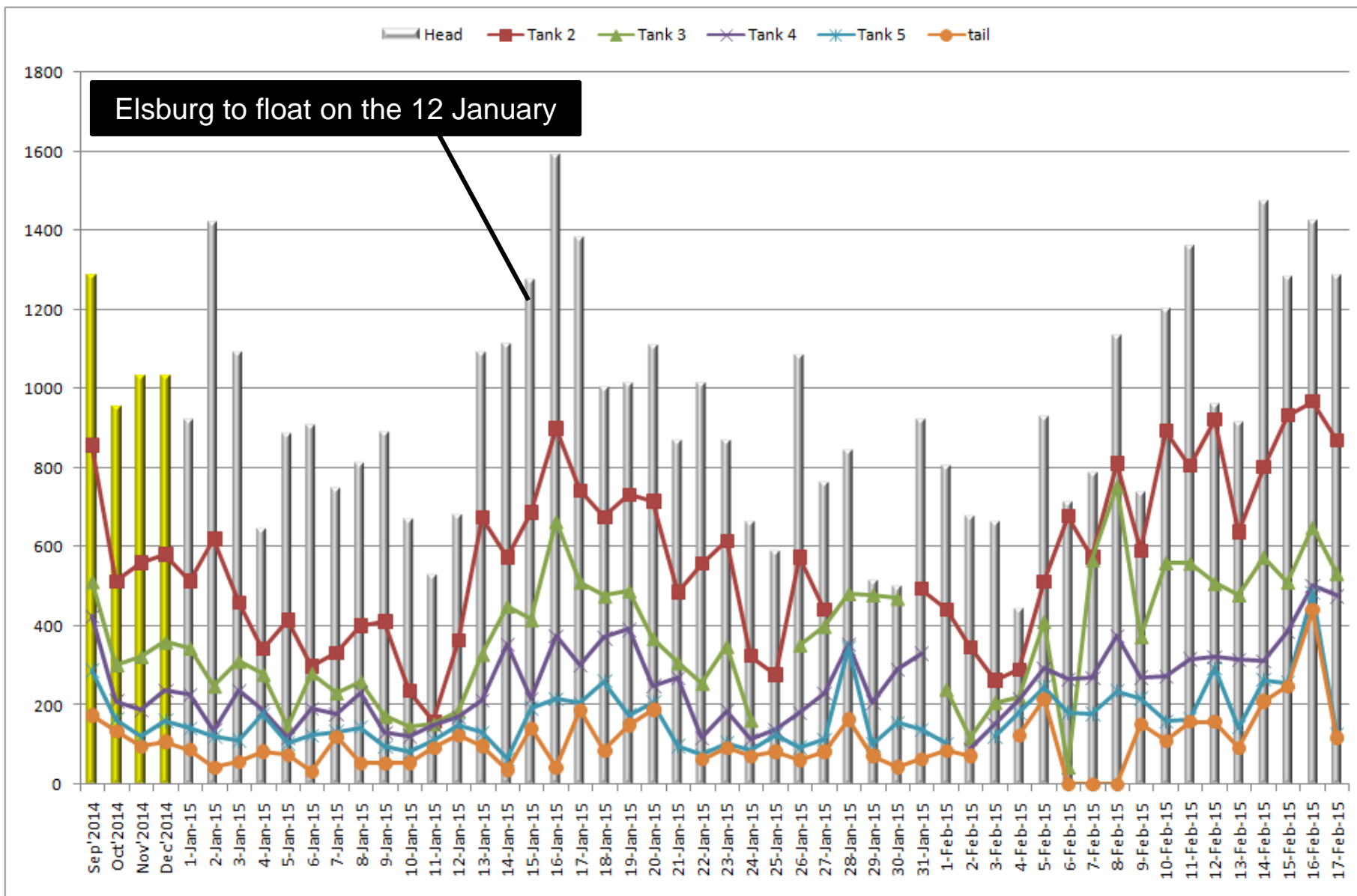
31/10/14 changed pH set point from 10.8-10.5 @ precon and 10.5-10.0 @ tank1



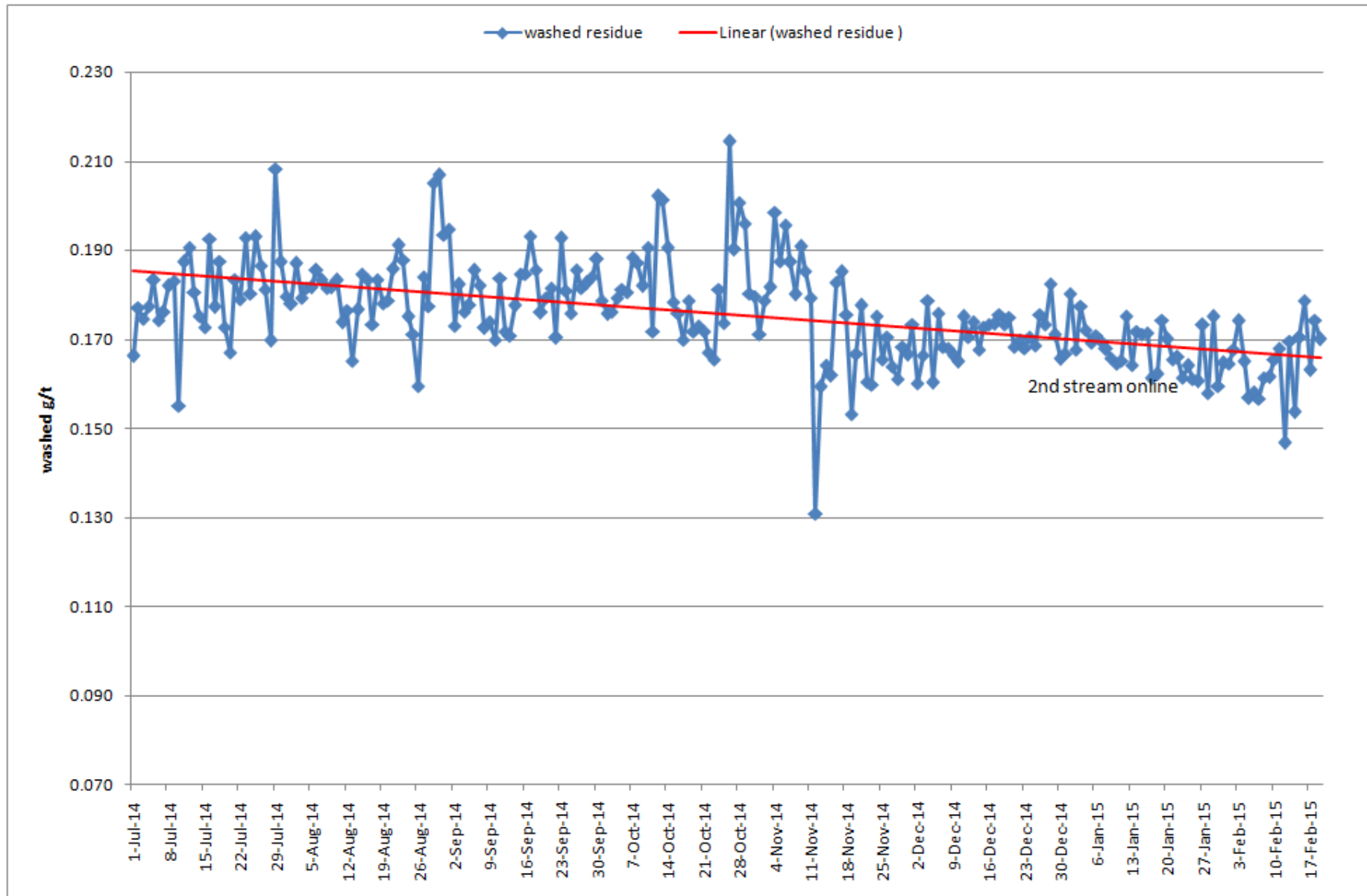
PUMPCELL



Gold on carbon values (Au, g/t)



CIL plant washed residue (g/t)



Tailings thickener improvements

- Rake modifications to improve thickener bed raking rate
- Variable speed fitted to rake drives
 - automatic speed-up or slow-down, depending on torque measured
- Circulation systems to improve operational control of thickener output density
- Feed rate monitoring
 - better feed distribution to all thickeners
- Operating philosophy improvements
 - minimum pumping rates; circulation conditions; routine discharge port flushing; high torque situations
- High torque alarms introduced at two levels
 - automatic SMS notification to key personnel
- Emergency power to underflow systems
 - including gland service, rake drives for all thickeners
- Dedicated gland service pumps, pipe lines for each set of underflow pumps
- Back-up potable water supply to top up gland service supply tanks

Registered office

1st Floor, Quadrum 1
Quadrum Office Park
50 Constantia Boulevard
Constantia Kloof Ext 28
Roodepoort
South Africa

PO Box 390
Maraisburg 1700
South Africa

Contact details

Tel: +27 (0) 11 470 2600

Fax: +27 (0) 11 470 2618

Niël Pretorius, CEO

Email: niel.pretorius@drdgold.com

James Duncan, investor relations

Email: james@rair.co.za

Website: www.drdgold.com

Shareholder data

(Incorporated in the Republic of South Africa)

Registration No.1895/000926/06

JSE share code: DRD

ISIN: ZAE 000058723

Issuer code: DUSM

NYSE trading symbol: DRD